

# MY COMFORT

## MOBILE COMFORT SOLUTIONS

Awnings	172 – 177
Window solutions / Hekis	178 – 187
Roller blind systems / Fly screens	188 – 192
Accessories	193
Vacuum cleaners	194 – 199
Lights	200 – 203
Technical data	204 – 209

### Creating a home

How do I turn a motorhome into my motorhome? How do I make it the place of my deepest comfort, the place for me to really relax? Most of the time, it's the simple things that make all the difference. Windows for fresh air and light. An inviting awning, perfect shade, ambience lighting – Dometic makes comfort mobile. And perfects recreational vehicles.



# LIGHT, AIR, SHADE AND MORE CUSTOMISED COMFORT

Mobile comfort by Dometic – custom solutions for recreational vehicles

Motorhome and caravan enthusiasts don't need much to feel happy once they're on the move. They seek to live at one with nature, to enjoy light and air even inside their rolling home. Dometic's diverse window solutions are just the thing. They can provide references: 70% of all European motorhome manufacturers install them. Protection from

too much sunlight, insects or prying eyes? Dometic has a comprehensive range of roller blinds waiting for you. We supply lights to create the perfect ambience and provides convenient solutions to such odious tasks as vacuum cleaning or drying the linen.

## Awnings



### Innovative system:

#### Premium awning without supports

An entirely new design of motorhome awning: The Dometic Premium awning requires no inconvenient support struts. Quick and easy to activate both electrically and manually. Electric version features wind sensor and remote control.

## Optional accessories



### Easy to fit:

#### Service hatches, clothes driers and cleaning accessories

Extendable clothes drier with sturdy clothes rack. Weatherproof service hatches for horizontal and vertical installation without screws.

## Roof windows/window solutions/accessories



### Tailor-made:

#### Hekis, hinged and sliding windows

Dometic window systems are used as original fittings – an excellent reference. They offer high functionality, are top quality and simple to operate.

## Vacuum cleaner



### Clean performance:

#### Vacuum cleaner system and battery vac

High-performance central vacuum cleaner system – ideal for hidden installation. Nothing is out of reach for the cordless battery-powered wet and dry vacuum cleaner.

## Roller blinds and fly screens



### Proven quality:

#### Blackout and fly screen systems

Both reliable protection from prying eyes and thermal insulation. For windows and roof openings in all standard sizes.

## Lights and replacement lamps



### For use on the road:

#### Lighting concepts for recreational vehicles

Fitted and surface-mounted spot lamps illuminate the interior and provide reading lights. Special lights illuminate workspaces, cupboards or storage compartments. LED technology substantially reduces power consumption.

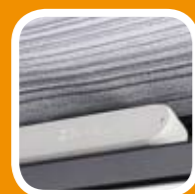
# DOMETIC PREMIUM AWNING

INSPIRED BY COMFORT

*Premium awning for motorhomes and caravans – without support struts*



INNOVATIVE  
ARM JOINT



WIND SENSOR



REMOTE  
CONTROL



BLUE



SILVER

STURDY VINYL BREEZE AWNING  
FABRIC AVAILABLE IN TWO COLOURS



**NEW**  
Awning without  
supports!



Mobile comfort solutions



**UNIQUE** → NO SUPPORT STRUTS → NO AWKWARD SETTING UP

# SUN PROTECTION WITHOUT STRUTS DOMETIC PREMIUM AWNING

Ready immediately – simply unwind and enjoy

This new motorhome awning eclipses its competitors by doing away with inconvenient support struts – just like your canopy at home. This means you can use the entire space in front of your recreational vehicle. It completely eliminates the awkward, time-consuming setup of con-

ventional camping awnings. You're bound to use your Dometic Premium Awning even during short stops by the roadside thanks to it extending in only a few seconds. Particularly convenient and safe is the electric version with remote control and wind sensor.



## Characteristics that make the Dometic Premium Awning stand out

- Comprehensive UV protection
- Scratch-resistant
- Non-bleaching colours
- Stain-proof



## Housing colours and awning fabric

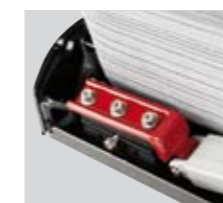
The Dometic Premium Awning is available in three housing colours: white, silver and anthracite. The awning fabric is made of highly resistant Vinyl Breeze with a transparent acrylic coating. It is available in either blue or silver.

- Housing colours: white, silver, anthracite
- Awning fabric: blue or silver stripes

**CONVENIENT AND SAFE** → EXTENDS IN ONLY A FEW SECONDS



Mobile comfort solutions



### Arm joint Patent pending

Made of forged steel, extremely strong, essential for convenient use without vertical struts.



### Wind sensor Added safety in windy conditions

Included in electric version. Awning automatically retracts in strong wind.



### Tilt angle More shade or less?

The factory-set tilt angle of approx. 10 degrees can be adjusted to approx. 17 degrees at the arm joint.



### Remote control Activate at the touch of a button

As standard for the electric version. Convenient retraction and extension as well as stopping in any position at the touch of a button.



## Comfort features of the Dometic Premium Awning

- Simply extend and enjoy – no awkward setup
- No inconvenient struts – the entire space in front of the vehicle is yours to use
- Electric version comes with remote control and wind sensor
- Sturdy awning fabric with pattern on both sides
- Two tilt angles possible
- Top cover features integrated brush
- Optional for electric version: sun sensor for optimal shade depending on sunlight; wall-mounted radio remote control for convenient operation at the location of your choice.
- Additional accessories for both awning variants

### The comforts of home on board

#### Electric/manual operation

As the world's leading manufacturer of recreational vehicle awnings, Dometic has covered all approaches to motorhome awnings. The electric variant of the Dometic Premium Awning is an innovation that is particularly convenient and safe. Its show-stopper is the arm joint manufactured from forged steel – patent pending. This focal component of the ingenious mechatronics facilitates use of the awning without support struts. The electric version in particular is thus the benchmark regarding convenience and safety. The unique sun screen and weather shelter is fully automatic and operated at the touch of a button. A standard wind sensor automatically retracts the awning when wind force reaches critical levels. A gain in safety – and one thing less to worry about.



Awning: electric	Housing white, fabric blue	Housing white, fabric silver	Housing silver, fabric blue	Housing silver, fabric silver	Housing anthracite, fabric blue	Housing anthracite, fabric silver
---------------------	----------------------------------	------------------------------------	-----------------------------------	-------------------------------------	---------------------------------------	---

Width of fabric (cm)	Extension (cm)	Weight (kg approx.)	Ref. No.	Ref. No.	Ref. No.	Ref. No.	Ref. No.	Ref. No.
256	250	25.0	9108689953	9108689956	9108689954	9108689957	9108689955	9108689958
308	250	28.0	9108690079	9108690083	9108690080	9108690085	9108690082	9108690086
350	250	29.3	9108689547	9108689550	9108689964	9108689966	9108689965	9108689967
400	250	33.1	9108689968	9108689552	9108689969	9108689971	9108689970	9108689972
469	250	43.8	9108690093	9108690096	9108690094	9108690097	9108690095	9108690098
500	250	46.2	9108689551	9108689983	9108689980	9108689982	9108689981	9108689984

### Dometic awning accessories

Treat yourself to an optional extra or two to make your awning match your requirements perfectly. The accessories listed here were developed specially for Dometic Premium Awnings and can be ordered separately.



#### Shade View

For even more shade

Optional accessory for use with the manual or the electric version. A translucent, breathable front screen made of vinyl-coated polyester fabric is inserted in the groove at the front of the awning.

Shade View // polar white, 3 metres  
Ref. No.: 9108677349

Shade View // blue, 3 metres  
Ref. No.: 9108677353

Shade View // polar white, 4.5 metres  
Ref. No.: 9108677357

Shade View // blue, 4.5 metres  
Ref. No.: 9108677361



Awning: manual	Housing white, fabric blue	Housing white, fabric silver	Housing silver, fabric blue	Housing silver, fabric silver	Housing anthracite, fabric blue	Housing anthracite, fabric silver
-------------------	----------------------------------	------------------------------------	-----------------------------------	-------------------------------------	---------------------------------------	---

Width of fabric (cm)	Extension (cm)	Weight (kg approx.)	Ref. No.	Ref. No.	Ref. No.	Ref. No.	Ref. No.	Ref. No.
260	250	22.9	9108689939	9108689943	9108689941	9108689944	9108689942	9108689945
313	250	27.0	9108690073	9108690076	9108690074	9108690077	9108690075	9108690078
355	250	27.2	9108689548	9108689652	9108689866	9108689875	9108689867	9108689876
405	250	31.1	9108689868	9108689654	9108689869	9108689877	9108689870	9108689878
474	250	41.8	9108690087	9108690090	9108690088	9108690091	9108690089	9108690092
505	250	44.2	9108689653	9108689879	9108689871	9108689880	9108689872	9108689881



#### Sun sensor

Automatic thermal protection

Optional accessory for the electric version. Extends the awning depending on the sunlight. Your advantage: even when you're not around, the vehicle is protected from excessive heat and the air-conditioner consumes less power for cooling.

Sun sensor // Ref. No.: 9108690136

#### Wall-mounted switch (w/o picture)

Added operating convenience

Optional accessory for the electric version. Cordless radio transmitter. Functions: extend and retract, stop. Extended position can be programmed.

Wall-mounted switch // Ref. No.: 9108690753



**Dometic**

Adjustable height

# AIRQUAD – INNOVATIVE UNPOWERED VENTILATION SYSTEM

Roof windows with passive ventilation for motorhomes

Power for ventilation or air conditioning systems is precious and costly, but the wind blows free of charge. Dometic AirQuad takes in more wind than any other roof window, creates a pleasant flow of fresh air and directs it into the vehicle. And for this unique product, the direction of the wind is irrelevant. Its success lies in the new type

of patented flow guiding element, which is built into a glass dome. The AirQuad lets you enjoy active ventilation and passive cooling with absolutely no energy costs. An effective alternative to hinged roof windows and a useful addition to your air conditioning system.

→ Dometic SEITZ AirQuad video

Take a photo of the QR code shown on the right with your smartphone camera and it takes you directly to the video, or enter <http://qr.my-caravanning.com/en/airquad/> in your internet browser.



For more details, see the overview on page 204

## Patented ventilation system

- Inner frame with blackout and fly screen, variably adjustable
- Easy to use with handles
- Five positions (to the front, rear, left, right or up)
- Maximum adjustable height: 80 mm
- Available with or without forced ventilation
- Double acrylic glazing
- Designed for standard roof openings of 400 mm x 400 mm
- For roof thicknesses of 23 to 60 mm
- Variable height adjustment for regulation of the air intake

## Intelligent ventilation

### Dometic SEITZ AirQuad

3.42

**For caravans.** Easy to use with handles. Double acrylic glazing, blackout and fly screen.

- Weight: 3.4 kg
- Frame material: ASA
- Frame colour: RAL 9001
- Installation dimensions: 500 x 500 mm
- Opening: 400 x 400 mm

Dometic AirQuad with forced ventilation, 23 – 42 mm  
Ref. No. 9104100319

Dometic AirQuad without forced ventilation, 23 – 42 mm  
Ref. No. 9104106414

Dometic AirQuad with forced ventilation, 43 – 60 mm  
Ref. No. 9104100320

Dometic AirQuad without forced ventilation, 43 – 60 mm  
Ref. No. 9104106415

## Highly effective

Ventilation that requires no electricity



FOR STANDARD ROOF OPENINGS



The air outside is "gathered" from all sides and directed into the vehicle via the patented air flow guiding element. This creates a pleasant, cool indirect air flow. The amount of air can be regulated by adjusting the height of the glass dome.



SIMPLE OPERATION



WITH BLACKOUT ...



... AND FLY SCREEN

Mobile comfort solutions

# STATE-OF-THE-ART ROOF WINDOWS THE HEKI RANGE

Would you like a brighter, more friendly ambience in your recreational vehicle? Dometic tilting roof windows allow lots of light and fresh air into the interior. Our extensive "Heki" range offers designs suitable for all types of caravan and motorhome. Classic Heki, Midi Heki, Mini Heki, remote-controlled, hand-lever or crank: take your pick! All Hekis come equipped with roller blinds made of Duette honeycomb fabric, roller blind fabric or single-pleated.

## Hekis by Dometic

- Five designs for caravans and motorhomes
- Opening dimensions 960 x 655 mm
- Remote-controlled, with hand-lever or crank
- Assembly kits and spoilers available as accessories

For more details and accessories for the Dometic SEITZ Heki range, see the overview on p. 204/205.



### The motorhome classic 3.42 Dometic SEITZ Heki 1

**For motorhomes:** five positions for optimum ventilation adjustment, polyurethane frame with high insulation capacity.

- Maximum opening angle: 70°
- Double acrylic glazing
- Inner frame with blackout and fly screen
- Sturdy locking system

Ref. No. 9104100112

### The caravan classic 3.42 Dometic SEITZ Heki 2

**For caravans:** inner frame with blackout roller blind and fly screen, simultaneously and continuously adjustable. Pneumatic springs for convenient roof window adjustment.

- Maximum opening angle: 55°
- Double acrylic glazing
- Forced ventilation

Ref. No. 9104100235

#### + Optional extras

Inner frame with integrated lights and Duette honeycomb roller blind, double-pleated

Ref. No. 9104100241

### Exclusive roof window 3.42 Dometic SEITZ Heki 2 deluxe

**For caravans:** inner frame with blackout roller blind and fly screen, simultaneously and continuously adjustable. The double-pleated Duette honeycomb roller blind guarantees excellent thermal insulation. Pneumatic springs for convenient roof window adjustment.

- Maximum opening angle: 55°
- Double acrylic glazing
- Integrated lighting
- Forced ventilation

Ref. No. 9104100240



### Luxury model with crank Dometic SEITZ Heki 3plus 3.42

**For motorhomes and caravans:** with pleated, black gauze fly screen and two integrated lights for low-light ambience. Fly screen and blackout roller blind are fitted from the side and can be adjusted as desired. The double-pleated Duette honeycomb roller blind provides perfect sun protection.

- Maximum opening angle: 70°
- Double acrylic glazing
- Sturdy locking system
- Frame material: weatherproof ASA
- Integrated lighting

Ref. No. 9104100292



### The luxury roof window Dometic SEITZ Heki 4plus 3.42

**For motorhomes and caravans:** Heki 4plus offers you absolute convenience with a useful remote control. The dome closes automatically in rain. With pleated, black gauze fly screen and two integrated lights for low-light ambience. Fly screen and blackout roller blind are fitted from the side and can be adjusted as desired.

- Maximum opening angle: 70°
- Double acrylic glazing
- Sturdy locking system
- Frame material: weatherproof ASA
- Integrated energy-saving lamps
- Control light indicates when correctly locked

Ref. No. 9104100294



RAIN SENSOR FOR HEKI 4PLUS



INTEGRATED LIGHTS

Maximum  
comfort



## MORE LIGHT AND AIR MIDI HEKI AND MINI HEKI

A large roof opening of 700 x 500 mm makes the vehicle interior a lot brighter and the influx of fresh air is also easily regulated with midi Heki by Dometic. It's available with or without forced ventilation, with handles, a crank or electrically driven. The mini Hekis designed for standard 400 x 400 mm roof openings are available in two variants. Easy to fit, easy to use and easy on the budget.



WITH HANDLE



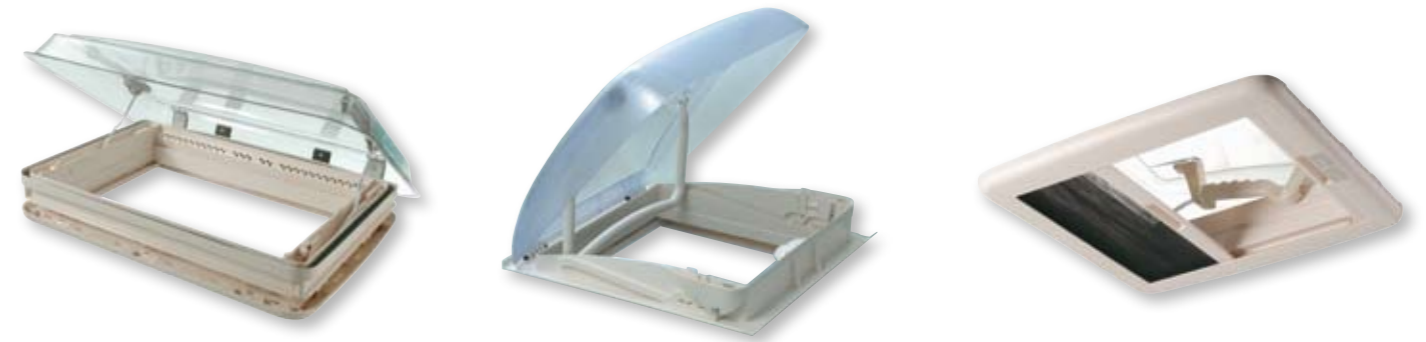
WITH CRANK



WITH ELECTRIC DRIVE

### Midi Heki and Mini Heki

- Midi Heki opening dimensions 700 x 500 mm
- Mini Heki opening dimensions 400 x 400 mm
- Blackout and fly screen
- Assembly kits, fly screen frame (midi Heki) and spoilers available as accessories



### Dometic SEITZ Midi Heki

3.42

**For motorhomes and caravans.** The large roof opening (700 x 500 mm) allows optimum ventilation. Easy to use with lever, crank or electric system. Assembly kits available as accessory.

- Inner frame with blackout and fly screen (can be adjusted separately)
- Available with or without forced ventilation
- Maximum opening angle: 45° or 60°
- Double acrylic glazing
- For roof thicknesses of 25 to 60 mm
- Three positions: fully open, intermediate and bad-weather position

Midi Heki is available with hand lever, crank or electric drive, with or without forced ventilation.

### Dometic SEITZ Mini Hekiplus

3.42

**For motorhomes and caravans.** This small roof window fits neatly into the roof opening for the standard size of 400 x 400 mm and provides maximum light. The opening angle is determined by the hand-lever system.

- Inner frame with blackout and fly screen (can be adjusted separately)
- Available with or without forced ventilation
- Maximum opening angle: 50°
- Double acrylic glazing
- Three positions
- For roof thicknesses of 25 to 60 mm

Mini Hekiplus is available with or without forced ventilation.

### Dometic SEITZ Mini Heki S

3.42

**For caravans.** Small roof windows, great effect: mini Heki S is designed for standard roof openings (400 x 400 mm) and is easy to open thanks to its handles.

- Inner frame with blackout and fly screen (can be adjusted separately)
- Easy to use with handles
- Forced ventilation
- Maximum adjustable height: approx. 80 mm
- Five positions
- Single acrylic glazing
- For roof thicknesses of 23 to 60 mm

Mini Heki S is available for roof thicknesses 23–42 mm and 43–60 mm.



#### Our tip:

This Dometic cleaning agent for regular cleaning removes all types of dirt, even grease and nicotine film. It prevents static build-up and dust accumulation without using a solvent. The acrylic-glazing polish and special cloth can remove clouding and light scratches.

For more details, see the overview on page 193







Install  
and go!

## CUSTOMISED WINDOW SOLUTIONS FOR EVERY VEHICLE S4 SERIES – MADE-TO-MEASURE BY THE MARKET LEADER

Are you looking for a sophisticated frame window solution for your motorhome or caravan? Then we recommend the hinged and sliding windows from the Dometic SEITZ S4 series. They come with excellent references. After all, they were designed by the international market leader for

polyurethane and aluminium window systems and have been installed countless times already. They stand for high functionality, first-rate quality, easy operation and are available in many sizes.

Contents, specifications and availability are subject to change due to the technical improvement.

### The benefits of S4 windows

- Fly screen and blackout roller blinds can be clipped together and simultaneously adjusted with only one hand
- Easy handling in different positions
- High degree of insulation: blackout roller blinds with aluminium coating
- Quick and easy installation
- Robust quality with double acrylic glazing
- Highly versatile: for wall thicknesses of 26 – 41 mm (fitted by shortening the inner frame)
- Large range of sizes

### Complete system

#### Dometic SEITZ S4 hinged windows 3.42

Proven millions of times: complete windows for motorhomes and caravans with telescopic hinges for convenient ventilation and built-in blackout roller blinds and fly screens. This outstanding insulation corresponds to construction standards for homes. Security locking system prevents windows from being opened from the outside.

Available in 50 sizes from 350 x 500 to 1600 x 600 mm to match the window type.

### Top choice

#### Dometic SEITZ S4 sliding windows 3.42

The classic model with acrylic glass panes and locking system. The front pane (from the driver's perspective) is adjustable, the rear pane is fixed. External and internal frames are screwed together from the inside and provide durable and effective insulation.

Available in 27 sizes from 500 x 450 to 1450 x 600 mm to match the window type.



S4 HINGED WINDOWS WITH POLYURETHANE FRAMES



S4 SLIDING WINDOWS WITH POLYURETHANE FRAMES

Contents, specifications and availability are subject to change due to the technical improvement.



For caravans and motorhomes

### Benefits and material properties

- Notably less heat in the caravan/motorhome
- Protects the window against scratches, resins and dirt
- Sturdy material and high-quality finish
- Simple to use
- High UV resistance
- High longevity, protection from fading and bleaching
- Fungicide treatment prevents mould
- Light-resistant, retains original colour
- 100% polyester

# PERFECT SUN PROTECTION DOMETIC SUNSHADE

## Free air circulation

The quick-to-fit window coverings offer two significant benefits. They provide highly reliable protection from sunlight and heat and they are fitted on the outside of hinged side and roof windows. This means the windows can remain open, ensuring good ventilation of the vehicle

interior. Also, because the coverings reduce heat build-up in the interior, they relieve the strain on your air conditioner – you can look forward to substantially reduced power consumption and shorter running times.



Heat protection

3.42

### Dometic SunShade

### Side window coverings for Dometic SEITZ hinged windows



Side window coverings

Roof window coverings

Product (mm)*	Glazing thickness (mm)	Ref. No.
700 x 300	668 x 232	9103500012
700 x 500	668 x 434	9103500017
700 x 550	668 x 484	9103500023
700 x 600	668 x 534	9103500019
800 x 450	768 x 382	9103500014
900 x 450	868 x 382	9103500020
900 x 500	868 x 434	9103500021
900 x 550	868 x 484	9103500015
900 x 600	868 x 534	9103500011
1000 x 500	968 x 434	9103500016
1000 x 600	968 x 534	9103500013
1200 x 600	1168 x 534	9103500022
1300 x 600	1268 x 534	9103500018
—	—	9103500008
—	—	9103500009
—	—	9103500010

### Roof window coverings for Dometic SEITZ Hekis

- for Mini Hekiplus
- for Midi Heki
- for Heki 1 – 4

\*Additional sizes available on request: [www.my-caravanning.com/fensterabdeckungen](http://www.my-caravanning.com/fensterabdeckungen)



VERY EASY TO CLEAN



HIGH TEAR-RESISTANCE



## A roller blind range to cover everything

- A variety of solutions for all common window and roof hatch sizes
- Privacy and shade
- Sophisticated complete systems combine blackout and fly screens
- Ratchet and spring roller blinds for windows without frames
- Custom fitting/shortening possible

# PROTECT YOUR PRIVACY DOMETIC SEITZ ROLLER BLIND SYSTEMS

Original equipment quality – developed by the world's leading manufacturer of motorhome and caravan windows.

Not keen on prying eyes? Deny them insights – using your favourite from the comprehensive range of Dometic roller blinds. Choose what suits your vehicle and your tastes. The Mini-double cassette roller blinds with integrated fly screen are even available for roof windows. For windows without frames, we particularly recommend the handy

Rastrollo ratchet roller blinds. These, too, combine blackout and fly screen to great effect. All roller blinds are available in various dimensions and colour combinations. Custom fitting is not a problem as the lateral guide rails can be shortened.

All sizes and reference numbers are listed in the overview on p. 208/209.

Contents, specifications and availability are subject to change due to the technical improvement.



### Fly screen

#### Dometic SEITZ Mini-double cassette roller blind/roof window roller blind 1302 3.42

For perfect comfort on the road: fly screen and blackout roller blind can be joined together and then adjusted at the same time. Alternatively, the roller blind can be used separately in three positions.

- Night-time security: when the roller blind is closed, a small gap remains open, allowing air to circulate through the fly screen
- The fly screen at the top, the blackout screen at the bottom of the window
- Excellent insulation with aluminium coating
- Vertical guide rails can be shortened
- Also available for roof windows

Available in thirteen different sizes from 630 x 700 to 1530 x 750 mm (and in three sizes for roof windows), in grey-white or pearl white.

Contents, specifications and availability are subject to change due to the technical improvement.

### Complete system

#### Dometic SEITZ Rastrollo 2000 3.42

Designed for installing above the window, this roller blind is the perfect solution for windows without frames. It is fitted with a fly screen and a shade for sun protection – both of which can be adjusted in a variety of positions. Integrated slots provide ample ventilation, even when the roller blind is pulled down.

- Excellent insulation with aluminium coating
- Vertical guide rails can be shortened
- Highly effective protection from insects

Available in eighteen different sizes from 630 x 700 to 1930 x 800 mm, in grey-white or pearl white.

# NO ENTRY SIGHT SCREEN AND SUN SHADE FOR THE SMALL BUDGET

Blinded by the sun? Value your privacy? A single touch suffices. Dometic offers you a simple, particularly inexpensive screen system in the form of the spring roller blind. The blind is available in the colours alu-sand or grey. Its width can easily be shortened to fit your requirements. The outer side's aluminium vapour-coating provides excellent reflection of sunlight. When determining the width necessary for your window, please bear in mind that the blind should extend slightly beyond the sides of the window pane. The ideal total width of the roller blind is approximately 3 cm more than the window's width.

### For windows without frames

#### Dometic SEITZ spring roller blind

The roller blind is fitted with a head fixture and has a tab at the bottom for easy use. The simple but effective system provides a sun screen and privacy in the driver's cabin.

- The roller blind can be shortened in width.
- Available in grey or sand-coloured, each with aluminium coating



### Benefits of the spring roller blind

- Inexpensive privacy and shade
- Added insulation through aluminium coat on the outside
- Sturdy aluminium head fixture and grip
- Simple operation by tab
- Width can be adjusted to fit

#### Sight and fly screens

3.42

#### Dometic SEITZ Spring roller blind



Product (mm)	Weight (kg)	Ref. No.	Spring roller blind alu-sand Ref. No.	Spring roller blind grey Ref. No.
370 x 600	0.35	9104100300	—	—
420 x 600	0.35	9104100301	—	—
470 x 600	0.40	9104100302	—	—
520 x 600	0.40	9104100303	—	—
570 x 600	0.45	9104100304	—	—
620 x 700	0.50	9104100305	—	—
670 x 700	0.50	9104100306	—	—
720 x 700	0.55	9104100307	—	—
770 x 700	0.55	9104100218	9104100206	—
820 x 700	0.60	9104100308	—	—
870 x 700	0.60	9104100309	—	—
920 x 700	0.65	9104100219	9104100207	—
970 x 700	0.65	9104100220	9104100208	—
1020 x 700	0.80	9104100310	—	—

Product (mm)	Weight (kg)	Ref. No.	Spring roller blind alu-sand Ref. No.	Spring roller blind grey Ref. No.
1070 x 700	0.80	9104100311	—	—
1120 x 700	0.85	9104100221	9104100209	—
1170 x 700	0.90	9104100312	—	—
1220 x 800	1.00	9104100313	—	—
1270 x 800	1.00	9104100222	9104100210	—
1320 x 800	1.10	9104100223	9104100211	—
1370 x 800	1.10	9104100224	9104100212	—
1420 x 800	1.20	9104100316	—	—
1520 x 800	1.30	9104100225	9104100213	—
1620 x 800	1.30	9104100226	9104100214	—
1720 x 800	1.40	9104100227	9104100215	—
1820 x 800	1.40	9104100228	9104100216	—
1920 x 800	1.50	9104100229	9104100217	—

Contents, specifications and availability are subject to change due to the technical improvement.

# A BARRIER FOR GNATS, FLIES AND OTHER PESTS DOMETIC SEITZ FLY SCREENS

### Solutions for doors and Midi Heki

Being close to nature has one drawback: insects in your mobile living room and bedroom can be a real pest. Best to simply take precautions and add a custom-fitted fly screen to the stable door. The aluminium frame is attached to the top, separately opening half of the door. Fresh air is

still admitted to the vehicle interior – the irritating bugs are not. The protective frame available for retrofitting was specially developed for Dometic SEITZ Midi Heki and, besides insects, also keeps leaves and dirt outside.

For more details, visit [www.my-caravanning.com](http://www.my-caravanning.com)



### Fresh air without a plague of insects For stable doors

#### Dometic SEITZ fly screen

3.42

Let the fresh air in and keep the insects out – no sooner said than done with Dometic's clever, economical fly screen solution. The aluminium frame is simply attached to the top half of the door, which can be opened separately.

- Durable, powder-coated aluminium frame
- Sturdy, glass-fibre reinforced fly screen
- Extremely easy to use
- Low space requirement (only 62 mm deep)
- Available in two standard sizes

580 x 1100  
Ref. No.: 9104100238

615 x 1100  
Ref. No.: 9104100239

### Fly and leaf screen

#### Accessories for Dometic SEITZ Midi Heki

3.42

Leaves and dirt no longer get into the vehicle and interfere with the roof window operation or the roller blind system. The fly screen can easily be retrofitted for any Midi Heki with crank or electric operation and removed again for cleaning purposes. Extremely sturdy model with aluminium profiles and UV resistant polyester material.

Fly screen frame Midi Heki  
Ref. No.: 9104100259



Contents, specifications and availability are subject to change due to the technical improvement.

# BLACKOUT SCREENS FOR DRIVER'S CABINS DOMETIC SEITZ ROLLER BLINDS

Keeps out prying eyes – excellent thermal insulation

Whatever might be going on – or what might have been left lying around – in your caravan's cab is nobody's business. The high-quality Dometic SEITZ blackout systems for windscreen and side windows keep out prying eyes. And the double-pleated Duette honeycomb material also provides

excellent thermal insulation – heat as well as cold are kept out. The aluminium-coated Dometic SEITZ windscreen roller blinds also display excellent thermal insulation properties. Both screen variants are available for the Fiat Ducato and many more motorhome models of the same design.



EASY TO FIT

## Double-pleated honeycomb Dometic SEITZ blackout system

3.42

For the Fiat Ducato Type 250 and the Peugeot Boxer and Citroën Jumper of the same design (without roof carrier). Faltstore made of double-pleated Duette honeycomb material – screening and heat insulation in perfect combination. For windscreen and side windows.

- Quick and easy to assemble, without covering the ventilation slots
- Absorbs up to 99% ultra-violet rays
- High degree of insulation from heat and cold (due to internal aluminium-laminated honeycomb system)
- Variably adjustable
- High resistance compared to single-pleated material

Windscreen roller blind, grey (left-hand-drive) // Ref. No.: 9104100266

Windscreen roller blind, grey (right-hand-drive) // Ref. No.: 9104100267

Side screens, grey (left/right) // Ref. No.: 9104100268

## Aluminium-coated Dometic SEITZ windscreen roller blinds

3.42

For Fiat Ducato Type 250 and Peugeot Boxer and Citroën Jumper of the same design (without roof carrier) as well as Fiat Ducato Type 230 and 244.

- Screening and insulation due to an aluminium coating on the exterior
- Powder-coated cassette with roller blind
- Available for left- and right-hand-drive models (type 250)

Windscreen roller blind, grey (left-hand-drive), for Fiat Ducato Type 250  
Ref. No.: 9104100269

Windscreen roller blind, grey (right-hand-drive), for Fiat Ducato Type 250  
Ref. No.: 9104100270

Windscreen roller blind, beige (left-hand-drive), for Fiat Ducato Type 230 and 244 // Ref. No.: 9104100233

Windscreen roller blind, grey (left-hand-drive) // Ref. No.: 9104100234



# DRIERS, CLEANING ACCESSORIES AND SERVICE HATCHES

Dometic



## Convenient drying

### Dometic SEITZ clothes drier

3.42

Wet linen quickly dries on the pull-out adjustable clothes drier by Dometic SEITZ. Three hanging rails and an especially sturdy towel rail are available. Only a small amount of space is required for mounting and when not in use, the clothes drier is easily folded together.

- W x H x D: 600 x 50 x 100 mm (folded up)
- W x H x D: 600 x 50 x 220 mm (extended)
- Material: three drying rails made of plastic-coated, galvanised steel, one aluminium towel rail
- Supplied with two aluminium wall brackets

Ref. No. 9104100230



## Standard version

### Dometic SEITZ SK 4 service hatch

3.42

Spray cast from weatherproof ASA. Fitted in the opening on the vehicle without screws (for vertical or horizontal installation).

- Equipped with multi-point locking and closing system (except size 375 x 305 mm)
- Suitable for wall thicknesses of 23 to 42 mm
- Available in five different sizes

Available in five sizes from 375 x 305 to 1000 x 405 mm.

## Everything for gentle cleaning

### Dometic SEITZ acrylic-glazing polish, special polishing cloth and cleaner

3.42

This cleaning agent (250 ml) for regular cleaning removes all types of dirt, even grease and nicotine film. It prevents static build-up and dust accumulation without using a solvent. The acrylic-glazing polish (75 ml) and special cloth can remove clouding and light scratches. All three products are also available together as a cleaning kit.

Acrylic-glazing polish 75 ml // Ref. No.: 9104100242

Special polishing cloth // Ref. No.: 9104100243

Acrylic-glass cleaner 250 ml // Ref. No.: 9104100244

Cleaning kit // Ref. No.: 9103500007



## Perfect design

### Dometic SEITZ SK 5 service hatch

3.42

The attractive design of this weather-resistant service hatch blends in to the exterior of your recreational vehicle. No need for screws for this simple assembly. Vertical or horizontal assembly possible.

- Hinges on the inside
- Integrated ventilation for Dometic cassette toilet [60 x 310 mm]
- Secure multi-point locking and closing system
- Available in four different sizes
- Suitable for wall thicknesses of 23 to 36 mm

Available in four sizes from 360 x 310 to 1000 x 420 mm.

# DOMETIC CV 2004 VACUUM CLEANER

INSPIRED BY COMFORT

*High-performance central vacuum cleaner system for hidden installation.*



EXTENSIVE RANGE



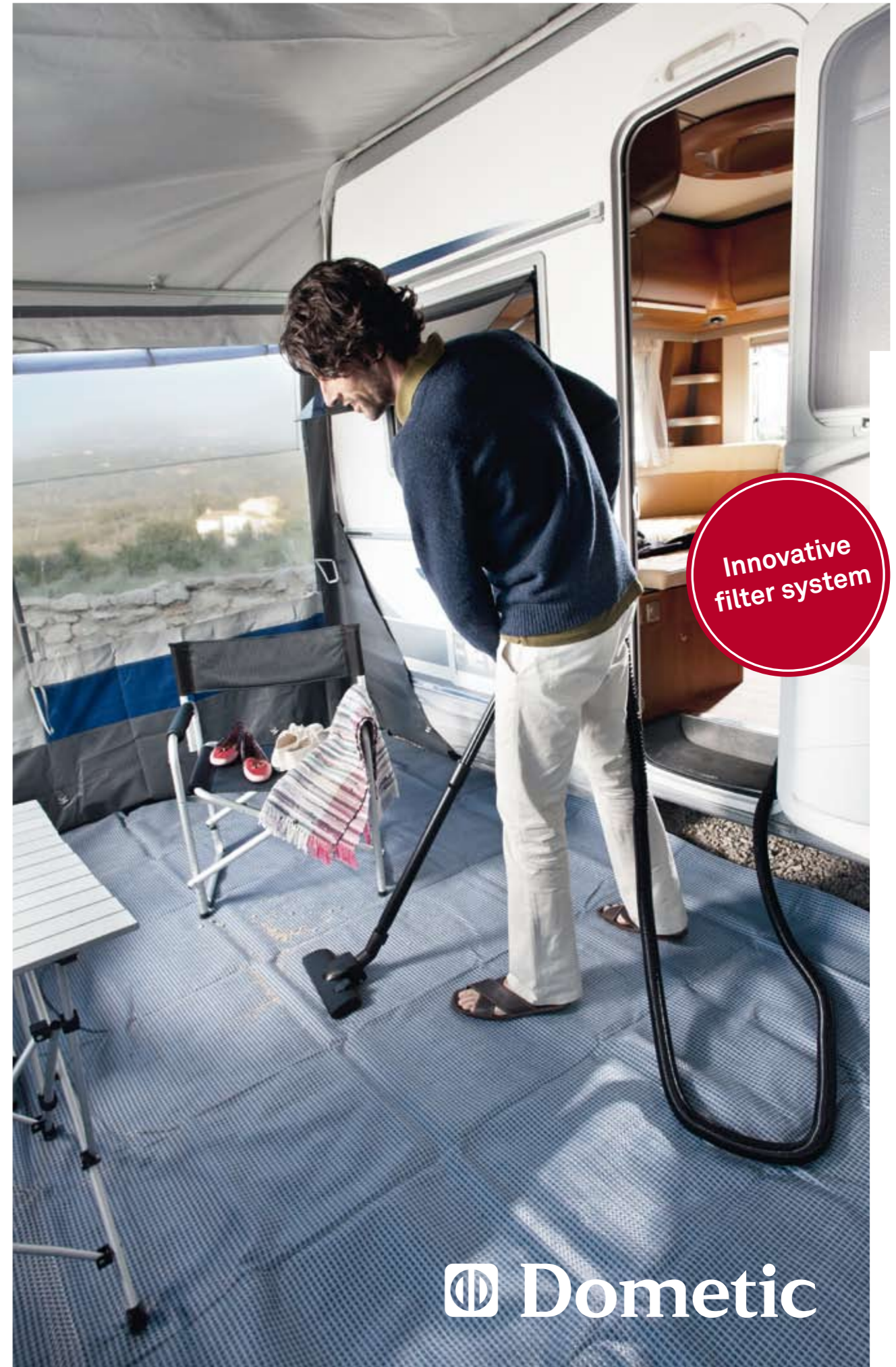
HIDDEN INSTALLATION



AUTOMATIC START



SIMPLE BAG CHANGING



Innovative filter system

 Dometic



**Extensive range**

QUICKLY READY → QUICKLY STORED

# THE POWER TO CLEAN! CENTRAL VACUUM CLEANING SYSTEM

Powerful, compact and concealed

The Dometic vacuum cleaner system CV 2004 fits into a shoe box. And can be so perfectly integrated into unused storage spaces that only a small "socket" remains visible. The appliance starts automatically when the hose end is

inserted into the socket and switches off automatically when removed. The high-performance appliance sucks dirt from the tightest gaps. Its innovative triple filter system also serves as an efficient air cleaner.



## Benefits of the CV 2004

- Efficient and hygienic thanks to a powerful motor and triple filter system
- Ideal for hidden installation in storage compartments
- Can be installed horizontally or vertically
- Extensive range thanks to flexible 12-metre hose
- Various brushes and nozzles included
- Hypoallergenic (HEPA filter system)



### Feature 1: 12-metre hose

The 12-metre long hose reaches into the farthest corners.



### Feature 3: Auto-start

When the vacuum hose is connected, the vacuum cleaner starts automatically.



### Feature 2: Space-saving assembly

Invisible from the outside: the vacuum cleaner can be kept in a storage compartment or in the garage.



### Feature 4: Bag replacement

Just like a household vacuum cleaner: the bag is easy and quick to change.

## Mr Invisible

### Dometic CV 2004

3.31

Central vacuum cleaner system for motorhomes

- Input voltage: 230 volts
- Current consumption: 5.5 A
- Vacuuming performance: 2500 mm water column
- Material: plastic housing (black)
- W x H x D: Front panel: 243 x 460 x 30 mm  
Housing: 209 x 413 x 100 mm
- Weight: 3.7 kg
- Scope of delivery: central unit, installation accessories, accessory bag, vacuum hose, various nozzles and brushes, crevice nozzle, vacuum cleaner bag

Ref. No. 9103500002

Optional extras: vacuum cleaner bags // Ref. No.: 9103500005



**SERIES STANDARD: COMPREHENSIVE ACCESSORIES FOR ANY SITUATION**



## Compact suction

- Convenient battery vacuum cleaner for use in vehicles or at home
- Maximum mobility with rechargeable 12-volt battery
- Can be recharged from 12 and 230 volts
- Cleaning power: 400 mm water column
- Easy-to-clean dust container and fabric filter

## Vacuum wonder

### WAECO PowerVac PV 100

3.31

Wet/dry vacuum cleaner with 12-volt rechargeable battery

- Motor: 12 volts DC, 28,000 rpm
- Battery: 12 volts DC, 2.6 Ah
- Operating time: up to 18 min ±10%
- Recharge time: 10 – 14 h (automatic switch-off)
- Operating temperature: 0°C to +40°C
- Power input: approx. 90 watts
- Vacuuming performance: approx. 400 mm water column (±10%)
- Capacity: 3.8 l
- Material: Handle: ABS  
Filter: polyester  
Dust container: PP
- W x H x D: 270 x 320 x 198 mm
- Weight: 2150 g
- Scope of delivery: vacuum cleaner, hose, attachments for upholstery, rugs and narrow gaps, carrying strap, mains adapter, 12-volt charging cable, operating instructions

Ref. No. PV-100



## Charge and clean

The WAECO PowerVac battery gives you 18 minutes of uninterrupted operation. Then, simply recharge from the power socket (mains adapter included). Recharging takes 10–14 hours and stops automatically. The 3.8-litre dust container and the reusable fabric filter can be removed for cleaning.

## Top cleaning power – minimal power consumption

Specifying the vacuum created in “mm water column” (mmH) provides the best information on the appliance’s suction power. This is where WAECO PowerVac scores excellent results. Compared with a 1200-watt high-tech vacuum cleaner, which generates about 1500 mm of water column, the battery vac achieves a proud 400 mm at a modest power consumption of 90 watts!

# BATTERY-POWERED WET/DRY VACUUM CLEANER WAECO POWERVAC PV 100

## Get rid of that dirt!

The handy vacuum cleaner comes complete with integrated battery – no need for an external power supply. Its substantial vacuuming power is more than a match for even the most stubborn dirt or fluids. Following an extended round of vacuuming, the battery is recharged

through the power socket, making it ready for the next round. Thanks to its compact design, PowerVac can be stored anywhere – storage compartments, garage, boot or broom cupboard. A handy universal appliance – both on the move and at home.


 WAECO  
 by Dometic GROUP


WET/DRY VACUUM CLEANER



UPHOLSTERY NOZZLES



EASY-TO-CLEAN FILTER



CREVICE NOZZLE FOR CORNERS





## The benefits of state-of-the-art LED technology

- Very low power consumption
- Long service life
- Minimal heat generation
- Longer battery running time in off-mains operation

### Recessed spotlights

Gentle room or reading light for a perfect fit.

### Surface-mounted spotlights

Bright, pleasant light; some models can be turned and swivelled for optimum reading light. Compact design permits fitting in narrow spaces.

### Special lighting

From kitchen cabinet lighting to access lights and flashlights for outdoor use: our light designers have thought of everything.

# REDISCOVER LIGHT AND CREATE AMBIENCE WITH DOMETIC LIGHT

## Custom lighting concepts for recreational vehicles

Light brightens up rooms, helps our sense of orientation and adds to our safety. Light is also an ideal design element: it creates individual accents, enhances ambience and comfort. No matter what your ideas are, why not

realise them with lights by Dometic? Specially designed for mobile use, the majority of them utilise state-of-the-art LED technology. Dometic lights boast an elegant minimalist design which blends into every interior.

### Swivelling reading light



**Dometic LIGHT L20RM** 3.35

Swivelling recessed spotlight with ON/OFF switch. Uses economical LEDs.

- Input voltage: 8 – 16 volts DC
- Output: 1 watt
- Bulbs: G4 back pin long, power-LED
- Light colour: warm white
- Material: plastic, glass
- ø x D: 80 x 20 mm

Ref. No. 9106500020



**Dometic LIGHT L21TM** 3.35

Swivelling surface-mounted spotlight with ON/OFF switch. Uses economical LEDs.

- Input voltage: 8 – 16 volts DC
- Output: 1 watt
- Bulbs: G4 back pin long, power-LED
- Light colour: warm white
- Material: plastic, glass
- ø x D: 85 x 60 mm

Ref. No. 9106500021



**Dometic LIGHT L22TM** 3.35

Swivelling surface-mounted spotlight with ON/OFF switch. Uses economical LEDs.

- Input voltage: 8 – 16 volts DC
- Output: 1 watt
- Bulbs: G4 back pin long, power-LED
- Light colour: warm white
- Material: plastic, glass
- ø x D: 75 x 85 mm

Ref. No. 9106500022

### Soft room lighting



**Dometic LIGHT L23RM** 3.35

Elegant recessed spotlight with low depth integrates easily into any interior. Can be used as room lighting. Uses economical LEDs.

- Input voltage: 8 – 16 volts DC
- Output: 1 watt
- Bulbs: G4 PCB, side pin, power-LED
- Light colour: warm white
- Material: metal, glass
- ø x D: 65 x 20 mm

Ref. No. 9106500023

### Pivoting and swivelling reading light



**Dometic LIGHT L19TM** 3.35

Pivoting and swivelling surface-mounted spotlight with ON/OFF switch. Uses economical LEDs.

- Input voltage: 8 – 16 volts DC
- Output: 1 watt
- Bulbs: G4 back pin long, power-LED
- Light colour: warm white
- Material: plastic, glass
- ø x D: 75 x 85 mm

Ref. No. 9106500019



**Dometic LIGHT L24TM** 3.35

Pivoting and swivelling surface-mounted spotlight with ON/OFF switch. Low heat emission thanks to LED cold light mirror.

- Input voltage: 8 – 16 volts DC
- Output: 0.75 watts
- Bulbs: MR16 LED cold light mirror
- Light colour: warm white
- Material: aluminium
- ø x D: 75 x 100 mm

Ref. No. 9106500024



**Dometic LIGHT L25TM** 3.35

Pivoting and swivelling surface-mounted spotlight with ON/OFF switch. Low heat emission thanks to LED cold light mirror.

- Input voltage: 8 – 16 volts DC
- Output: 0.75 watts
- Bulbs: MR16 LED cold light mirror
- Light colour: warm white
- Material: plastic, glass
- ø x D: 75 x 120 mm

Ref. No. 9106500025

### Soft room lighting



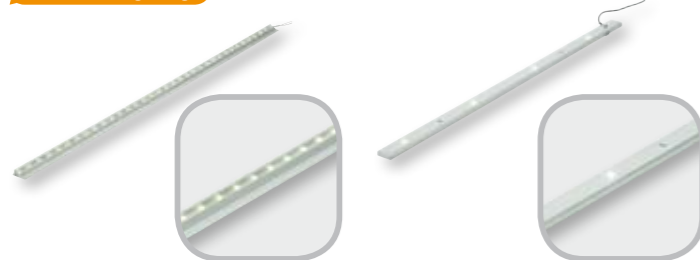
**Dometic LIGHT L26RM** 3.35

Elegant recessed spotlight with low depth integrates easily into any interior. Can be used as room lighting. Uses economical LEDs.

- Input voltage: 8 – 16 volts DC
- Output: 1 watt
- Bulbs: G4 PCB, side pin, power-LED
- Light colour: warm white
- Material: plastic, glass
- ø x D: 70 x 14 mm

Ref. No. 9106500026

Soft mood lighting



**Dometic LIGHT L30TM** 3.35

Striplight for fitting on top of cupboards by means of adhesive strip. Uses economical LEDs.

- Input voltage: 8 – 16 volts DC
- Output: 2.5 watts
- Bulbs: SMD-LED
- Light colour: warm white
- Material: metal
- W x H x D: 860 x 30 x 12 mm

Ref. No. 9106500030

Maximum flexibility



**Dometic LIGHT H10S** 3.35

Halogen reading lamp with goose neck, can be pivoted in any direction. With ON/OFF switch.

- Input voltage: 8 – 16 volts DC
- Output: 10 watts
- Bulbs: G4 halogen
- Light colour: warm white
- Safety clearance: 10 cm
- Material: plastic, glass
- ø x D: 75 x 295 mm
- Glass body: Ø 40 mm x 70 mm
- Foot: Ø 75 mm

Ref. No. 9106500014

Soft mood lighting



**Dometic LIGHT L27TM** 3.35

Triangular lamp for fitting underneath suspended cabinets. With ON/OFF switch. Uses economical LEDs.

- Input voltage: 8 – 16 volts DC
- Output: 1 watt
- Bulbs: Power LED
- Light colour: warm white
- Material: metal, glass
- W x H x D: 140 x 37 x 130 mm

Ref. No. 9106500027



**Convert and save energy!**  
Replacement LEDs

- Various solutions suitable for replacing halogen bulbs or halogen cold light mirrors
- Save up to 90% energy compared to halogen bulbs
- Luminosity corresponds to a 10-watt halogen lamp
- Minimal heat generation
- Long service life



**For the entry area**  
**Dometic LIGHT L29TM** 3.35

LED access lights of very small size for illumination near the ground.

- Input voltage: 8 – 16 volts DC
- Output: 0.1 watts
- Bulbs: LED
- Material: plastic
- W x H x D: 52 x 15 x 11 mm

Ref. No. 9106500029



**Suitable for outdoors**  
**Dometic LIGHT L37TM** 3.35

Versatile LED battery flashlight. Sturdy, high-grip housing, integrated hook (e.g. for use in tents), rear features a magnet and a thread for mounting on mini-tripods. Includes 230-volt charging station and 12-volt charging cable, integrated LED indicates charge level. Battery running time up to 5 hours.

- Input voltage: 3.6 volts
- Output: 1.5 watts
- Bulbs: 30 LEDs
- Material: ABS plastic
- W x H x D: 50 x 290 x 35 mm

Ref. No. 9106500037



**Cupboard light**  
**Dometic LIGHT L28TM** 3.35

Cabinet light with magnetic contact switch, battery-powered. Designed for custom use, e.g. in cupboards and storage compartments or in the safe. Attached by adhesive strip.

- Input voltage: 4.5 volts DC
- Output: 0.1 watts
- Bulbs: LED
- Material: plastic
- W x H x D: 30 x 65 x 20 mm

Ref. No. 9106500028

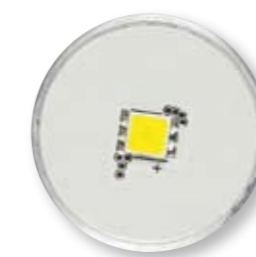


**Replacement LEDs**  
**Dometic LIGHT RetroFit Side Pin** 3.35

Replacement light, suitable for upgrading to LED technology. Replaces halogen lamps with G4 socket.

- Input voltage: 8 – 16 volts DC
- Output: 1 watt (luminosity corresponds to a 10-watt halogen lamp)
- Bulbs: PCB with power-LED
- Socket: G4 side pin
- ø x D: 25 x 10 mm

Ref. No. 9106500032



**Replacement LEDs**  
**Dometic LIGHT RetroFit Back Pin** 3.35

Replacement light, suitable for upgrading to LED technology. Replaces MR11 halogen cold light mirror or halogen lamps with G4 socket. Available as short or long version depending on the lamp's design.

- Input voltage: 8 – 16 volts DC
- Output: 1 watt (luminosity corresponds to a 10-watt halogen lamp)
- Bulbs: Power LED
- Socket: G4 back pin/G4 back pin long
- ø x D: 28.5 x 24 mm/28.5 x 28 mm

Dometic LIGHT RetroFit Back Pin  
Ref. No.: 9106500033

Dometic LIGHT RetroFit Back Pin long  
Ref. No.: 9106500035



**Replacement LEDs**  
**Dometic LIGHT RetroFit MR16** 3.35

Replacement light, suitable for upgrading to LED technology. Replaces MR16 halogen cold light mirror.

- Input voltage: 8 – 16 volts DC
- Output: 0.75 watts (luminosity corresponds to a 10-watt halogen lamp)
- Bulbs: MR16 LED cold light mirror
- Socket: MR16
- ø x D: 49 x 45 mm

Ref. No. 9106500034

Roof windows	Dometic SEITZ AirQuad 3.42		Dometic SEITZ Hekis 3.42			
	AirQuad		Heki 1	Heki 2	Heki 2 deluxe	Heki 3 plus
Ref. No. (with forced ventilation)	9104100319	9104100320	—	9104100235	9104100240	—
Ref. No. (without forced ventilation)	9104106414	9104106415	9104100112	—	—	9104100292
Motorhomes	•	•	•	—	—	•
Caravans	•	•	—	•	•	•
Operating						
Handles	•	•	•	—	—	—
Lever	—	—	—	•	•	—
Crank	—	—	•	—	—	•
Electric	—	—	—	—	—	—
Remote control	—	—	—	—	—	—
Positions	5	5	5 variable	3	3	variable
Max. opening angle	—	—	70°	55°	55°	70°
12-volt lights (watts)	—	—	—	—	4 x 5	2 x 8
Rain sensor	—	—	—	—	—	—
PMMA glazing						
Single	—	—	—	—	—	—
Double	•	•	•	•	•	•
Blackout						
Roller blind system	—	—	•	•	—	—
Duette	—	—	—	—	•	•
Single-pleated	•	•	—	—	—	—
Fly screen						
Single-pleated	•	•	—	—	—	•
Roller blind system	—	—	•	•	•	—
Frame material	ASA	ASA	Polyurethane foam	ASA	ASA	ASA
Frame colour RAL 9001	•	•	•	•	•	•
Standard roof thickness (mm)	23–42	43–60	27	25–32	25–32	25–32
Possible roof thickness (mm)	23–60*1	23–60*1	28–60*2	25–60*3	25–60*3	25–60*3
Installation dimensions = External space requirement (mm)	500 x 500	500 x 500	1100 x 820	1080 x 790	1080 x 790	1080 x 790
Space size (mm)	400 x 400	400 x 400	960 x 655	960 x 655	960 x 655	960 x 655
Weight (kg)	3.4	3.4	22.0	11.0	11.0	15.0
Optional extras:						
Inner frame Ref. No.	—	—	—	9104100241	—	—
Optional extras:						
Fly screen Ref. No.	—	—	—	—	—	—
Optional extras: spoiler (mm) Ref. No.	—	—	800 9104100236	800 9104100236	800 9104100236	800 9104100236
Optional extras: spoiler (mm) Ref. No.	—	—	1100 9104100237	1100 9104100237	1100 9104100237	1100 9104100237
Optional extras: assembly kit (mm) Ref. No.	—	—	—	32–39 9104100245	32–39 9104100245	32–39 9104100245
Optional extras: assembly kit (mm) Ref. No.	—	—	—	39–46 9104100246	39–46 9104100246	39–46 9104100246
Optional extras: assembly kit (mm) Ref. No.	—	—	—	46–53 9104100247	46–53 9104100247	46–53 9104100247
Optional extras: assembly kit (mm) Ref. No.	—	—	—	53–60 9104100248	53–60 9104100248	53–60 9104100248
Optional extras: assembly kit (mm) Ref. No.	—	—	—	—	—	—

\*1 Requires shortening of the screw bosses \*2 Requires shortening of the inner frame \*3 Requires additional assembly kit

Roof windows	Dometic SEITZ Midi Hekis 3.42			Dometic SEITZ Mini Hekis 3.42				
	Heki 4 plus	Midi Heki (lever)	Midi Heki (crank)	Midi Heki (electric)	Mini Heki plus	Mini Heki S		
Ref. No. (with forced ventilation)	—	9104100253	9104100255	9104100257	9104100251	9104100252	9104100289	9104100290
Ref. No. (without forced ventilation)	9104100294	9104100254	9104100256	9104100258	9104100249	9104100250	—	—
Motorhomes	•	•	•	•	•	•	•	•
Caravans	•	•	•	•	•	•	•	•
Operating								
Handles	—	—	—	—	—	—	•	•
Lever	—	•	—	—	•	•	—	—
Crank	—	—	•	—	—	—	—	—
Electric	•	—	—	•	—	—	—	—
Remote control	•	—	—	—	—	—	—	—
Positions	variable	3	variable	variable	3	3	5	5
Max. opening angle	70°	45°	60°	60°	50°	50°	—	—
12-volt lights (watts)	2 x 8	—	—	—	—	—	—	—
Rain sensor	•	—	—	—	—	—	—	—
PMMA glazing								
Single	—	—	—	—	—	—	•	•
Double	•	•	•	•	•	•	—	—
Blackout								
Roller blind system	—	—	—	—	—	—	—	—
Duette	•	—	—	—	—	—	—	—
Single-pleated	—	•	•	•	•	•	•	•
Fly screen								
Single-pleated	•	•	•	•	•	•	•	•
Roller blind system	—	—	—	—	—	—	—	—
Frame material	ASA	ASA	ASA	ASA	ASA	ASA	ASA	ASA
Frame colour RAL 9001	•	•	•	•	•	•	•	•
Standard roof thickness (mm)	25–32	30–34	30–34	30–34	25–42	43–60	23–42	43–60
Possible roof thickness (mm)	25–60*3	25–29/35–60*3	25–29/35–60*3	25–29/35–60*3	25–60*1	25–60*1	23–60*1	23–60*1
Installation dimensions = External space requirement (mm)	1080 x 790	880 x 650	880 x 650	880 x 650	550 x 510	550 x 510	500 x 500	500 x 500
Space size (mm)	960 x 655	700 x 500	700 x 500	700 x 500	400 x 400	400 x 400	400 x 400	400 x 400
Weight (kg)	15.5	8.0	8.5	9.0	3.3	3.3	2.9	2.9
Optional extras:								
Inner frame Ref. No.	—	—	—	—	—	—	—	—
Optional extras:								
Fly screen Ref. No.	—	9104100259	9104100259	9104100259	—	—	—	—
Optional extras: spoiler (mm) Ref. No.	800 9104100236	800 9104100236	800 9104100236	800 9104100236	9104100260	9104100260	9104100260	9104100260
Optional extras: spoiler (mm) Ref. No.	1100 9104100237	—	—	—	—	—	—	—
Optional extras: assembly kit (mm) Ref. No.	32–39 9104100245	25–29 9104100261	25–29 9104100261	25–29 9104100261	—	—	—	—
Optional extras: assembly kit (mm) Ref. No.	39–46 9104100246	30–34 9104100262	30–34 9104100262	30–34 9104100262	—	—	—	—
Optional extras: assembly kit (mm) Ref. No.	46–53 9104100247	35–42 9104100263	35–42 9104100263	35–42 9104100263	—	—	—	—
Optional extras: assembly kit (mm) Ref. No.	53–60 9104100248	43–52 9104100264	43–52 9104100264	43–52 9104100264	—	—	—	—
Optional extras: assembly kit (mm) Ref. No.	—	53–60 9104100265	53–60 9104100265	53–60 9104100265	—	—	—	—

Dometic SEITZ S4 windows

3.42

Windows

Size W x H (mm)	Overall size W x H (mm)	Space size W x H (mm)	Clearance dimension W x H (mm)	Weight (kg)	Ref. No.
350 x 500	393 x 531	343 x 498	254 x 354	4.1	9104100001
500 x 300	544 x 330	499 x 298	404 x 154	4.0	9104100002
500 x 350	544 x 380	500 x 348	404 x 204	4.2	9104100003
500 x 450	544 x 480	500 x 448	404 x 304	5.0	9104100004
500 x 500	544 x 531	499 x 499	404 x 354	5.7	9104100005
500 x 600	544 x 631	499 x 599	404 x 454	6.0	9104100006
550 x 550	594 x 581	549 x 549	454 x 404	5.7	9104100007
550 x 580	594 x 611	548 x 578	454 x 434	6.3	9104100008
550 x 600	594 x 631	549 x 599	454 x 454	6.1	9104100009
600 x 350	644 x 380	599 x 348	504 x 204	5.0	—
600 x 500	644 x 531	599 x 498	504 x 354	6.1	9104100010
600 x 600	644 x 631	599 x 599	504 x 454	7.0	9104100011
650 x 300	695 x 330	650 x 298	554 x 154	4.8	9104100012
700 x 300	745 x 330	700 x 298	604 x 154	5.3	9104100013
700 x 350	745 x 380	699 x 347	604 x 204	5.7	9104100014
700 x 400	745 x 430	702 x 398	604 x 254	6.1	9104100015
700 x 450	745 x 481	702 x 448	604 x 304	6.5	9104100016
700 x 500	745 x 531	700 x 498	604 x 354	7.0	9104100017
700 x 550	745 x 581	700 x 549	604 x 404	7.4	9104100018
700 x 600	745 x 631	702 x 599	604 x 454	7.7	9104100019
750 x 400	797 x 430	750 x 398	654 x 254	6.4	9104100020
750 x 450	797 x 481	749 x 447	654 x 304	6.6	9104100021
750 x 600	797 x 631	750 x 599	654 x 454	8.2	9104100022
800 x 350	846 x 380	800 x 347	704 x 204	6.6	9104100023
800 x 450	846 x 481	801 x 450	704 x 304	7.1	9104100024
900 x 300	948 x 330	902 x 298	804 x 154	6.6	9104100025
900 x 400	948 x 430	902 x 398	804 x 254	7.5	9104100026
900 x 450	948 x 481	902 x 448	804 x 304	8.0	9104100027
900 x 500	948 x 531	902 x 499	804 x 354	8.4	9104100028
900 x 550	948 x 581	902 x 549	804 x 404	8.6	9104100029
900 x 600	948 x 631	902 x 599	804 x 454	9.2	9104100030
1000 x 450	1048 x 481	1002 x 448	904 x 304	8.6	9104100031
1000 x 500	1048 x 531	1002 x 499	904 x 354	9.3	9104100032
1000 x 550	1048 x 581	1002 x 549	904 x 404	10.0	9104100033
1000 x 600	1048 x 631	1002 x 599	904 x 454	11.0	9104100034
1000 x 800	1048 x 832	1002 x 800	904 x 654	12.0	9104100035
1100 x 450	1148 x 481	1103 x 448	1004 x 304	9.9	9104100036
1100 x 550	1148 x 581	1102 x 549	1004 x 404	10.1	9104100037
1100 x 700	1148 x 733	1103 x 699	1004 x 554	11.9	9104100038
1200 x 300	1248 x 330	1201 x 297	1104 x 154	8.2	9104100039
1200 x 350	1249 x 380	1202 x 347	1104 x 204	8.8	9104100040
1200 x 500	1249 x 531	1203 x 500	1104 x 354	10.5	9104100041
1200 x 600	1249 x 631	1201 x 599	1104 x 454	12.5	9104100042
1200 x 700	1249 x 733	1201 x 699	1104 x 554	13.1	9104100043
1200 x 800	1249 x 832	1203 x 800	1104 x 654	13.8	9104100044
1300 x 550	1343 x 581	1298 x 549	1204 x 404	13.6	9104100045
1300 x 600	1343 x 631	1297 x 599	1204 x 454	14.2	9104100046
1450 x 550	1500 x 581	1453 x 549	1354 x 404	13.6	9104100047
1450 x 600	1500 x 631	1454 x 599	1354 x 454	14.9	9104100048
1450 x 700	1500 x 733	1452 x 699	1354 x 554	15.7	9104100049
1600 x 550	1650 x 581	1602 x 549	1504 x 404	15.6	9104100050
1600 x 600	1650 x 631	1602 x 599	1504 x 454	16.2	9104100051

Hinged window



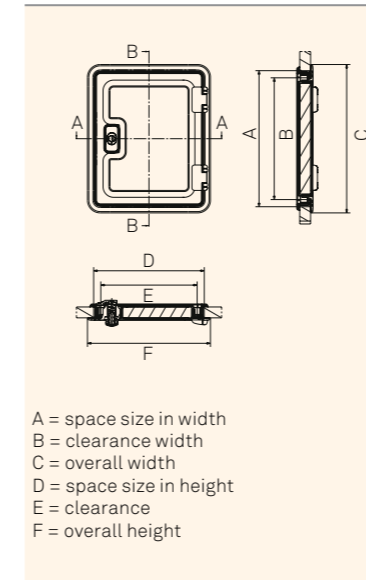
Ref. No.

Sliding window



Ref. No.

Service hatches



A = space size in width  
B = clearance width  
C = overall width  
D = space size in height  
E = clearance  
F = overall height

Dometic SEITZ SK 4

3.42

Size (mm)	Width (mm), hinge dimension			Height (mm)		
	Size A	Size B	Size C	Size D	Size E	Size F
375 x 305	375	335	409	305	265	338
700 x 305	700	660	734	305	265	338
700 x 405	700	660	734	405	365	438
1000 x 305	1000	960	1034	305	265	338
1000 x 405	1000	960	1034	405	365	438

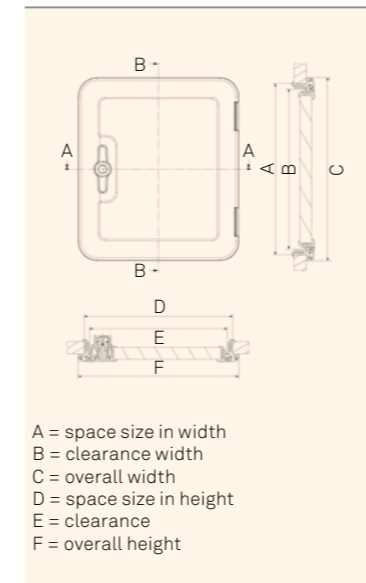
Wall thickness (mm)	Weight (kg)*	Ref. No.
23 - 32	0.99	9104100197
23 - 32	1.45	9104100198
23 - 42	1.56	9104100199
23 - 42	2.00	9104100200
23 - 42	2.20	9104100201

\* Weight without cover.  
All sizes in mm.  
Changes and errors reserved.

Dometic SEITZ SK 5

3.42

Service hatches



A = space size in width  
B = clearance width  
C = overall width  
D = space size in height  
E = clearance  
F = overall height

Size (mm)	Width (mm), hinge dimension			Height (mm)		
	Size A	Size B	Size C	Size D	Size E	Size F
360 x 310	360	337	385	310	288	335
650 x 350	648	625	673	348	326	337
750 x 300	748	725	773	298	276	323
1000 x 420	725	960	1023	418	396	443

Wall thickness (mm)	Weight (kg)*	Ref. No.
23 - 36	0.90	9104100202
23 - 36	1.30	9104100203
23 - 36	1.40	9104100204
23 - 36	2.00	9104100205

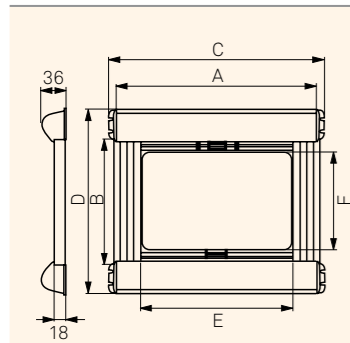
\* Weight without cover.  
All sizes in mm.  
Changes and errors reserved.

Dometic SEITZ Mini-double cassette roller blind/roof window roller blind 1302

3.42

Roller blinds

Standard size



A = width ordered  
B = height ordered  
C = overall width  
D = overall height  
E = width of window opening  
F = height of window opening

Size A (mm)	Size B (mm)	Size C (mm)	Size D (mm)	Size E (mm)	Size F (mm)	Weight (kg)
630	700	658	790	580	650	1.30
680	700	708	790	630	650	1.35
730	700	758	790	680	650	1.41
780	700	808	790	730	650	1.47
830	700	858	790	780	650	1.53
930	700	958	790	880	650	1.65
1030	700	1058	790	980	650	1.77
1130	700	1158	790	1080	650	1.89
1230	700	1258	790	1180	650	2.00
1330	750	1358	840	1280	700	2.15
1430	750	1458	840	1388	700	2.27
1480	750	1508	840	1430	700	2.33
1530	750	1558	840	1480	700	2.39

Special size for roof opening

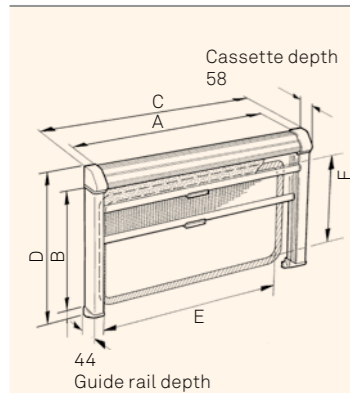
480	500	508	590	430	450	0.96
540	500	568	590	490	450	1.09
580	600	608	690	530	550	1.19

Dometic SEITZ Rastrollo 2000 blind

3.42

Roller blinds

Standard size



A = width ordered  
B = height ordered  
C = overall width  
D = overall height  
E = width of window opening  
F = height of window opening

Size A (mm)	Size B (mm)	Size C (mm)	Size D (mm)	Size E (mm)	Size F (mm)	Weight (kg)
630	700	670	794	600	650	1.52
680	700	720	794	650	650	1.57
730	700	770	794	700	650	1.63
780	700	820	794	750	650	1.68
830	700	870	794	800	650	1.74
930	700	970	794	900	650	1.85
1030	700	1070	794	1000	650	1.96
1130	700	1170	794	1100	650	2.06
1230	700	1270	794	1200	650	2.17
1330	800	1370	894	1300	750	2.37
1430	800	1470	894	1400	750	2.48
1480	800	1520	894	1500	750	2.53
1530	800	1570	894	1500	750	2.59
1580	800	1620	894	1550	750	2.60
1630	800	1670	894	1600	750	2.70
1730	800	1770	894	1700	750	2.81
1830	800	1870	894	1800	750	2.92
1930	800	1970	894	1900	750	3.02

3.42

Mini-double cassette roller blind grey-white

Mini-double cassette roller blind pearl white

Product (mm)	Ref. No.	Ref. No.
630 x 700	9104100052	9104100065
680 x 700	9104100053	9104100066
730 x 700	9104100054	9104100067
780 x 700	9104100055	9104100068
830 x 700	9104100056	9104100069
930 x 700	9104100057	9104100070
1030 x 700	9104100058	9104100071
1130 x 700	9104100059	9104100072
1230 x 750	9104100060	9104100073
1330 x 750	9104100061	9104100074
1430 x 750	9104100062	9104100075
1480 x 750	9104100063	9104100076
1530 x 750	9104100064	9104100077

Roof window roller blind 1302 grey-white

Roof window roller blind 1302 pearl white

480 x 500	9104100078	9104100081
540 x 500	9104100079	9104100082
580 x 600	9104100080	9104100083

3.42

Rastrollo 2000 grey-white

Rastrollo 2000 pearl white

Product (mm)	Ref. No.	Ref. No.
630 x 700	9104100127	9104100113
680 x 700	9104100128	9104100114
730 x 700	9104100129	9104100115
780 x 700	9104100130	9104100116
830 x 700	9104100131	9104100117
930 x 700	9104100132	9104100118
1030 x 700	9104100133	9104100119
1130 x 700	9104100134	9104100120
1230 x 700	9104100135	9104100121
1330 x 800	9104100136	9104100122
1430 x 800	9104100137	9104100123
1480 x 800	9104106410	9104100296
1530 x 800	9104100138	9104100124
1580 x 800	9104106413	9104100297
1630 x 800	9104100139	9104100125
1730 x 800	9104100140	9104100126
1830 x 800	9104100314	9104100298
1930 x 800	9104100315	9104100299